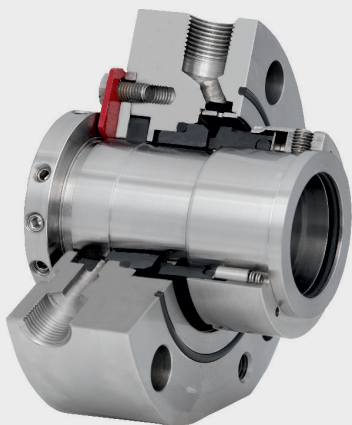


C861W0 Single Seals API 682 Seals For Pumps - Standard Cartridge Seals

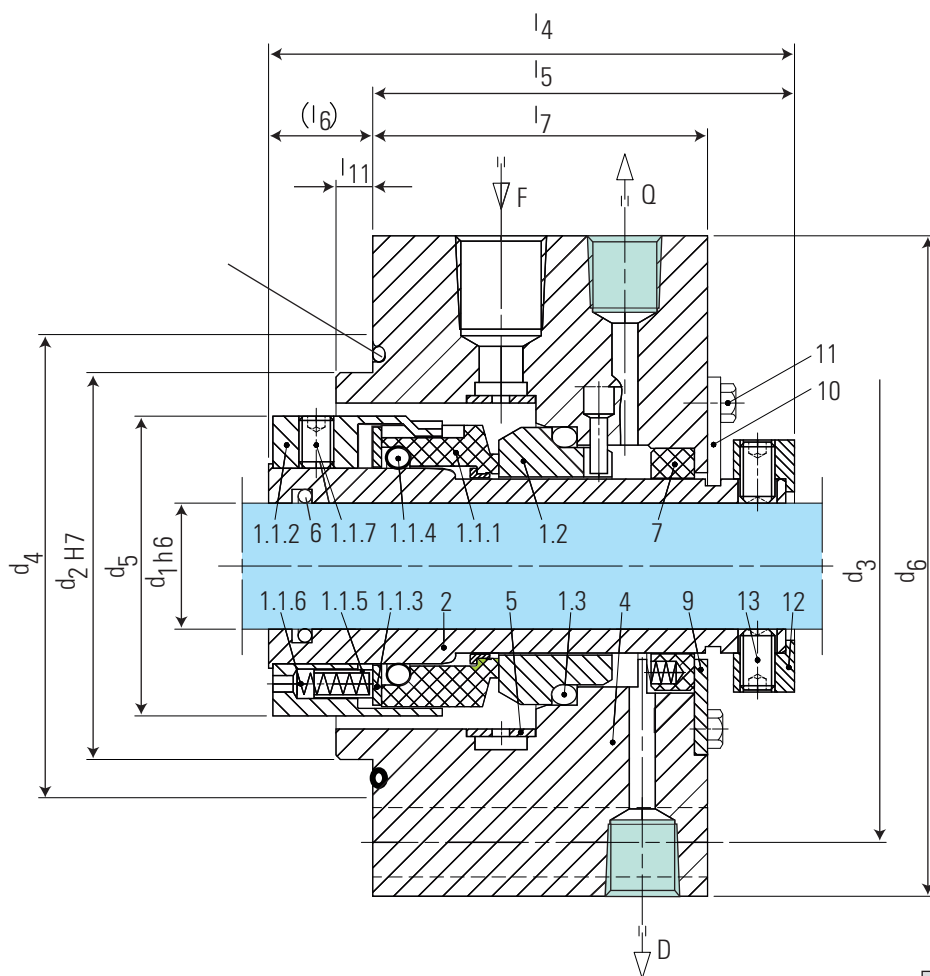


Product Description

1. Single seal configuration
2. Balanced design
3. Independent of direction of rotation
4. Cartridge construction
5. Category 2 and 3, Type A, Arrangement 1
6. Design in accordance to API 682 / ISO 21049
7. Pumping device available for increased efficiency in circulation (B750VP)
8. Rotary unit with multiple springs

Technical Features

1. Designed for "Low-Emission" conforming to the American STLE-limits
2. Can handle extensive applications in various temperatures and pressures
3. Versatile in design to fit various seal chambers
4. Material of construction available in special metallurgy



Item	Description
1.1.1	Seal face
1.1.2	Driver
1.1.3	Thrust ring
1.1.4, 1.3, 6, 8	O-ring
1.1.5	Sleeve
1.1.6	Spring
1.1.7	Set screw
1.2	Seat

Item	Description
2	Shaft sleeve
4	Housing
5	Insert
7	Throttle ring
9	Washer
10	Assembly fixture
11	Hexagon bolt
12	Set ring
13	Set screw



Typical Industrial Applications

Light hydrocarbons
Oil and gas industry
Petrochemical industry
Refining technology
API 610 / ISO 13709 pumps
Process pumps

Performance Capabilities

Sizes: $d = \text{Upto } 110 \text{ mm (Upto } 4.250\text{'')^*}$
Pressure: $p_1 = 40 \text{ bar (580 PSI)}$
Temperature: $t = -40 \text{ }^\circ\text{C...+ } 220 \text{ }^\circ\text{C}$
($-40 \text{ }^\circ\text{F...+ } 428 \text{ }^\circ\text{F}$)
Speed = 23 m/s (75 ft/s)
Permissible axial movement: $\pm 2.0 \dots 4.0 \text{ mm}$
depending on diameter and installation situation
* Other sizes on request

Standards

API 682 / ISO 21049

Materials

Seal face: Carbon graphite antimony impregnated (A)
Seat: Silicon carbide (Q1, Q2)
Secondary seals: EPDM (E), NBR (P), FKM (V), FFKM (K)
Springs: Hastelloy® C-4 (M)
Metal parts: CrNiMo steel (G), Duplex (G1), Hastelloy® C-4 (M)

Design variations

B750VP

Dimensions, items and descriptions as B750VN, but with pumping ring. Shorter installation length possible.

B750N

Dimensions, items and description as B750VN.
Seal face: Silicon carbide (Q1, Q2)
Seat: Silicon carbide (Q1, Q2)

Dimensional Data

Dimensions in inch

API/d ₁	API/d ₂	API/d ₃	API/d ₄	d ₅	d ₆	l ₄	l ₅	l ₆	l ₇	l ₁₁	Overall length
0.750	2.756	4.134	3.346	1.969	5.433	3.740	3.701	0.039	2.992	0.236	3.937
1.125	3.150	4.528	3.740	2.441	5.827	3.957	3.858	0.098	3.031	0.236	4.094
1.500	3.543	4.921	4.134	2.835	6.220	4.154	3.878	0.276	3.051	0.236	4.921
2.000	3.937	5.512	4.528	3.386	6.614	4.390	3.917	0.472	3.091	0.236	5.512
2.250	4.724	6.299	5.315	3.898	7.402	4.744	4.016	0.728	3.189	0.236	6.299
2.750	5.118	6.693	5.709	4.291	7.795	4.902	4.173	0.709	3.189	0.236	6.693
3.125	5.512	7.087	6.102	4.685	8.189	5.079	4.173	0.906	3.189	0.236	7.087
3.500	6.299	8.071	6.890	5.079	9.370	5.079	4.173	0.906	3.189	0.236	8.071
3.750	6.693	8.465	7.283	6.024	9.764	5.236	4.291	0.945	3.189	0.236	8.465
4.250	7.087	8.858	7.677	6.614	10.157	5.236	4.291	0.945	3.189	0.236	8.858

Dimensions in millimeter

API/d ₁	API/d ₂	API/d ₃	API/d ₄	d ₅	d ₆	l ₄	l ₅	l ₆	l ₇	l ₁₁	Overall length
20	70	105	85	50	138	95.0	94.0	1.0	76.0	6	100
30	80	115	95	62	148	100.5	98.0	2.5	77.0	6	104
40	90	125	105	72	158	105.5	98.5	7.0	77.5	6	125
50	100	140	115	86	168	111.5	99.5	12.0	78.5	6	140
60	120	160	135	99	188	120.5	102.0	18.5	81.0	6	160
70	130	170	145	109	198	124.5	106.0	18.0	81.0	6	170
80	140	180	155	119	208	129.0	106.0	23.0	81.0	6	180
90	160	205	175	129	238	129.0	106.0	23.0	81.0	6	205
100	170	215	185	153	248	133.0	109.0	24.0	81.0	6	215
110	180	225	195	168	258	133.0	109.0	24.0	81.0	6	225

Note: Additional technical & dimensional information will be provided on request.